

Statistics

cervical cancer

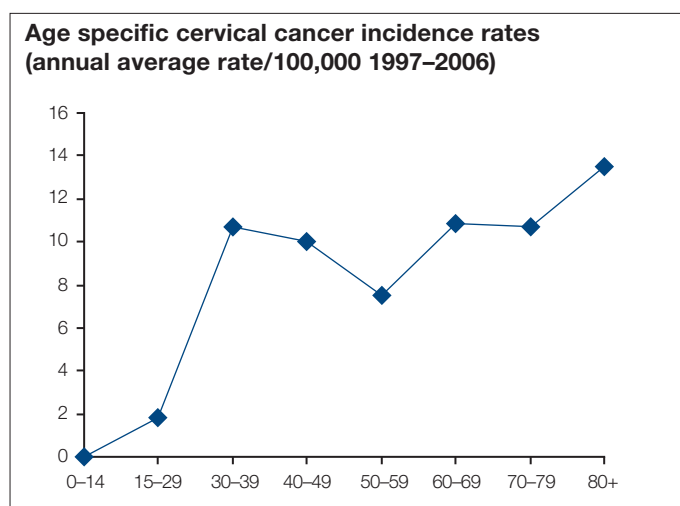
South Australia 2006 figures	females
number of cases	47
number of deaths	18
incidence/100,000 (ASR* Aust 2001 population)	5.6
mortality/100,000 (ASR* Aust 2001 population)	1.8
risk of developing cervical cancer (by age 75 years)	1 in 235

*ASR – Age Standardised Rate

Patterns in incidence and mortality

Age

The rate of cervical cancer in women under 30 is low but increases rapidly after the age of 30 years, remaining relatively high throughout later years in life.



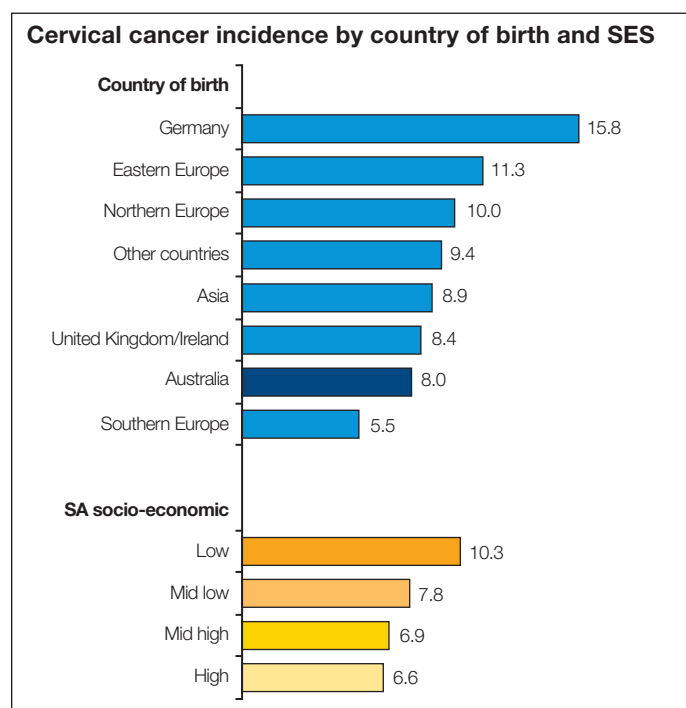
Country of birth

Within South Australia, females born in Germany and Eastern Europe had an elevated incidence in 1977–2000. By comparison, females born in Southern Europe had a lower incidence.

SES/region

During 1977–2001, females residing in low socio-economic areas of South Australia had a high incidence of cervical cancer. This corresponds with socio-economic gradients in other populations.

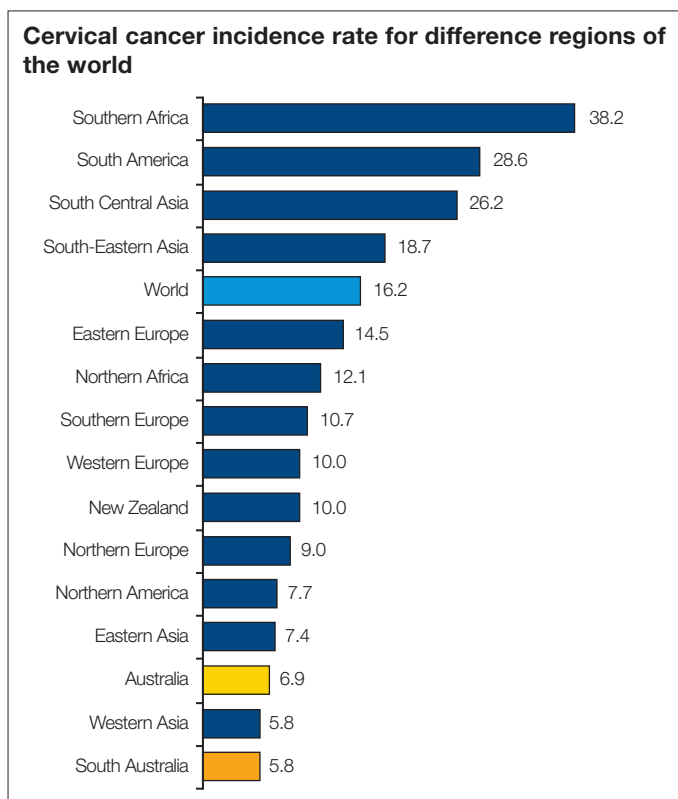
The incidence of cervical cancer did not differ appreciably between Adelaide and country regions in general during 1977–2001. Within Adelaide, however, the Western region had a higher incidence than the Eastern region. Although the rate appeared to be higher again in the West Coast, Flinders Ranges and Whyalla, this could have been due to chance.



(annual rate/100,000 – SA 1977–2001- ASR (World Pop.)

Global comparisons

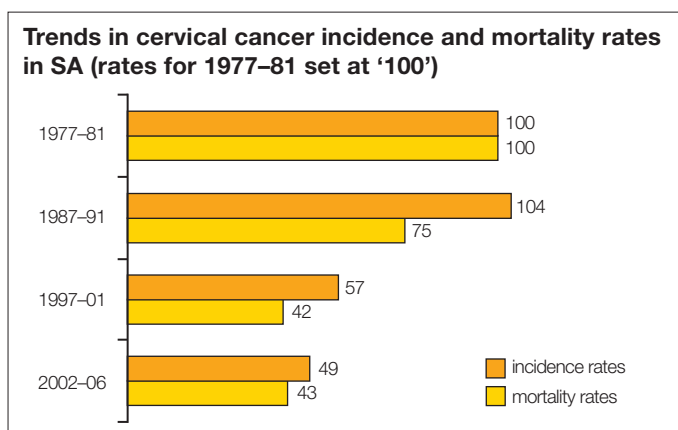
South Australia recorded a lower incidence of cervical cancer than comparison countries in 2002. The highest incidence was in Southern Africa, which was about six times the South Australian rate.



(rate/100,000 ASR (World Pop.) Globocan 2002)

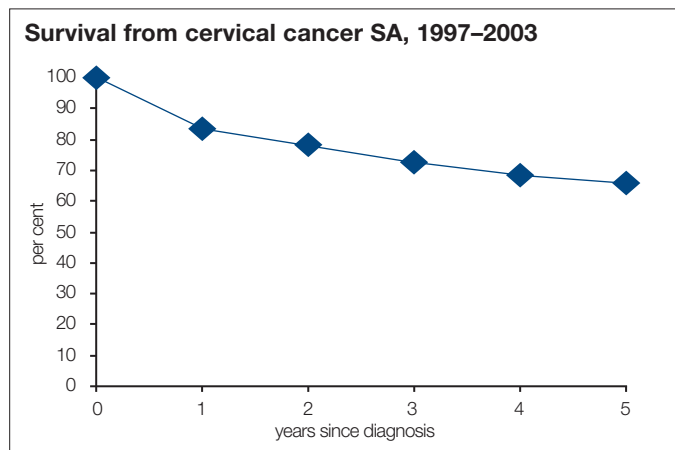
Trends

The incidence of cervical cancer reduced by 51% between 1977–81 and 2002–2006. This is attributed mostly to the detection of precursor lesions through screening, and their early treatment. There was a corresponding reduction in mortality of about 57%.



Survival

Two thirds of women diagnosed with cancer of the cervix between 1997 and 2003 survived for five years or more after diagnosis (65.7%). This survival rate is similar to the survival rate for women diagnosed between 1977 and 1981 (64.9%).



Risk factors

Risk factors include:

- not having regular Pap smears (normally recommended two yearly)
- early commencement of sexual activity
- having multiple sexual partners/a sexual partner who has had multiple partners
- tobacco smoking
- immunosuppression, as may occur from cancer therapy of medical treatment to prevent organ transplant rejection
- persistent HPV infection.

Updated March 2009 based on latest SA data (2006)

Data source:
Cancer Registry Reports, SA Dept Health
Globocan 2002, IARC