

Statistics

female breast cancer



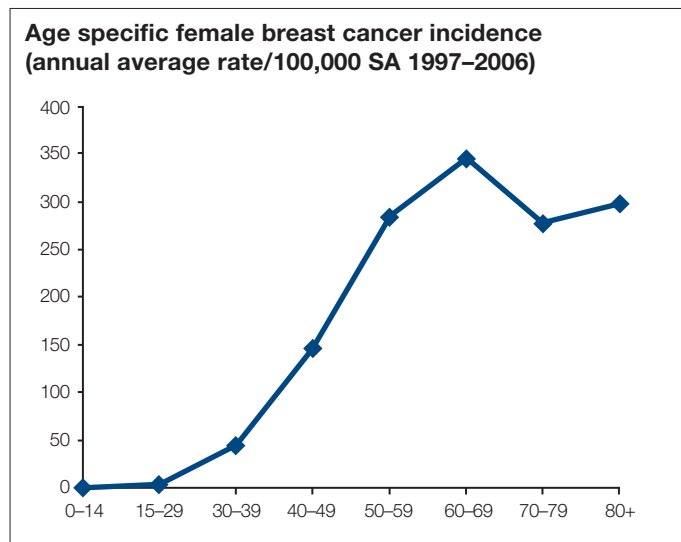
South Australia 2006 figures	females
number of cases	1044
number of deaths	245
incidence/100,000 (ASR* Aust 2001 population)	111.9
mortality/100,000 (ASR* Aust 2001 population)	23.8
risk of developing breast cancer (by age 75 years)	1 in 11

*ASR – Age Standardised Rate

Patterns in incidence and mortality

Age

Breast cancer is rare in women under 30 years of age but incidence rates increase steadily with age after 30, with the highest rate being among those aged 60–69 years. Rates decline slightly from 70 years of age but remain relatively high.



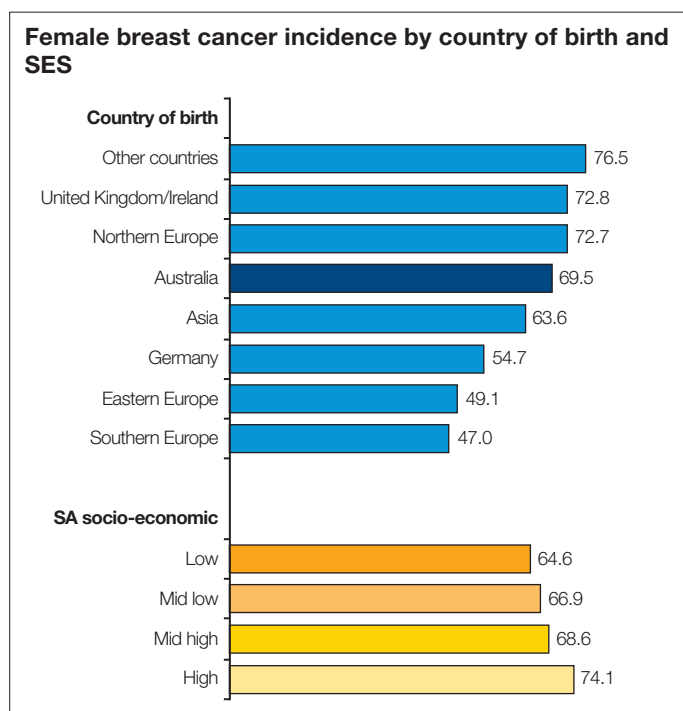
Country of birth

Within South Australia, female residents born overseas had an incidence about 8% lower than the Australian born during 1977–2000. This was partly due to low incidence rates for those born in Germany, Eastern Europe and Southern Europe.

SES/region

South Australian women residing in upper socio-economic areas had an elevated incidence during 1977–2001. Similar socio-economic trends have been reported in other populations.

Women residing in Adelaide had an incidence in 1977–2001 about 5% higher than their country counterparts. Incidence rates were higher in the Southern and Eastern regions than in the Western and potentially the Northern region of Adelaide. Country area differences in female breast cancer were within the ranges attributable to chance.



(annual rate/100,000 – SA 1977–2001 – ASR World Pop.)

Global comparisons

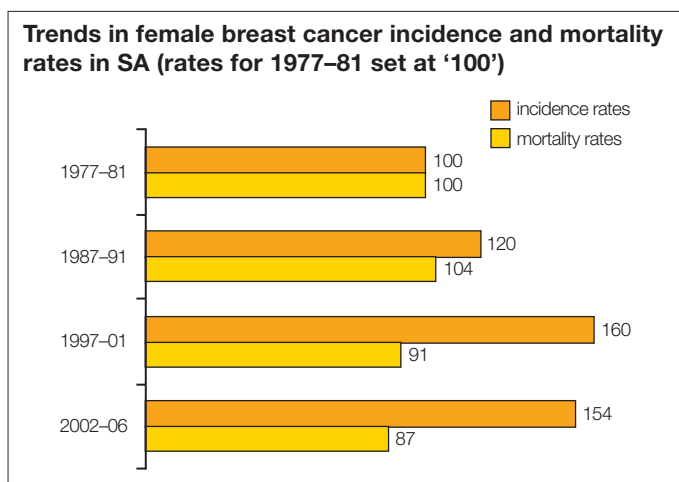
Australian, New Zealand and North American females had a relatively high incidence of breast cancer in 2002. South Australian females had a slightly higher rate to other Australian females. The incidence of this cancer varies approximately fourfold among females worldwide.



(rate/100,000 ASR World Pop., Globocan 2002)

Trends

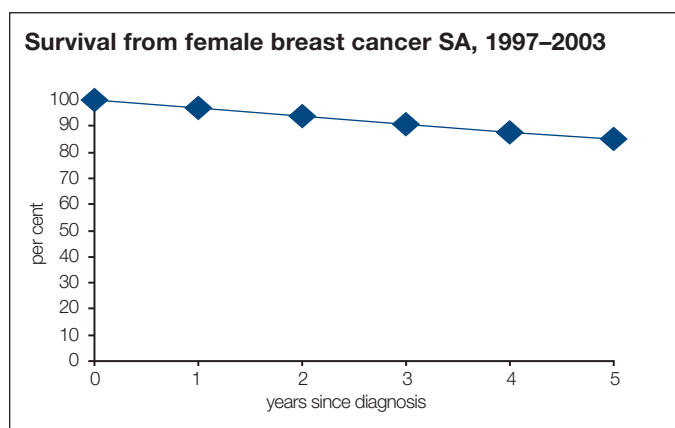
The incidence of female breast cancer increased by 60% from 1977–81 to 1997–01, and has remained high in 2002–06, with most of the increase occurring after population screening mammography began in the late 1980s. This would reflect the increased detection of small



cancers in the age range targeted for screening (50–69 years). While mortality rates were relatively stable during 1977–96, there was a drop of 9% between 1992–96 and 1997–2001, which also has continued in 2002–06. This is attributed to early effects of mammography screening, plus treatment advances.

Survival

Survival outcomes from breast cancer are quite favourable with 85% of women diagnosed between 1997 and 2003 surviving their cancer for five years or more. Rates have improved significantly over the past two decades when compared with women diagnosed between 1977 and 1981 of when only 72% survived five years or more.



Risk factors

Risk factors for female breast cancer include:

- a family history, a genetic predisposition (responsible for up to 5% of cancers)
- early onset menstruation or late menopause
- a history of no pregnancies or a late first full-term pregnancy
- high body weight after menopause.

Risk also may be increased when diets are low in vegetables and fruit and high in total fat and saturated/animal fat, and there is a high alcohol intake. Recent research indicates that prolonged use of hormone replacement therapy with combined oestrogen and progestin, or with oestrogen alone, can increase the risk of female breast cancer.

Updated March 2009 based on latest SA data (2006)

Data source:
Cancer Registry Reports, SA Dept Health
Globocan 2002, IARC