

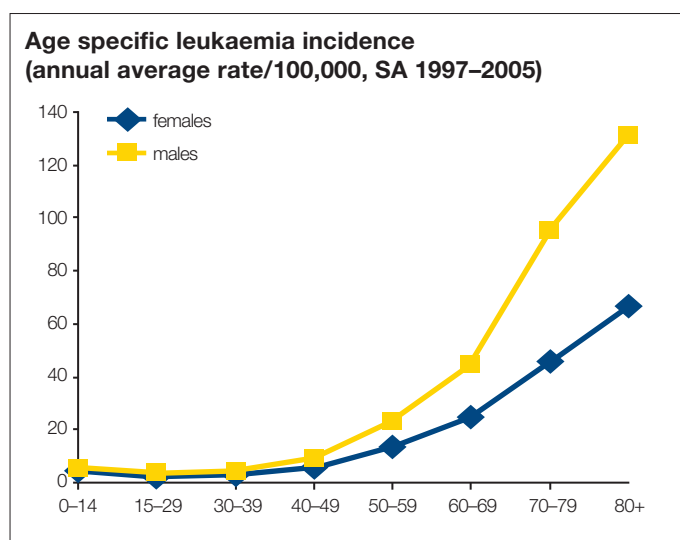
South Australia 2006 figures	males	females	total
number of cases	156	123	279
number of deaths	73	43	116
incidence/100,000 (ASR* Aust 2001 population)	18.7	12.8	15.5
mortality/100,000 (ASR* Aust 2001 population)	8.8	4.1	6.3
risk of developing leukaemia (by age 75 years)	1 in 68	1 in 99	1 in 81

\*ASR – Age Standardised Rate

## Patterns in incidence and mortality

### Age

This incidence of leukaemia increases steadily with age. While the incidence of leukaemia is low among younger people it is the leading cancer among children under 15 years.



### Gender

Males in South Australia are nearly twice as likely to develop leukaemia as females. This pattern is seen in other populations.

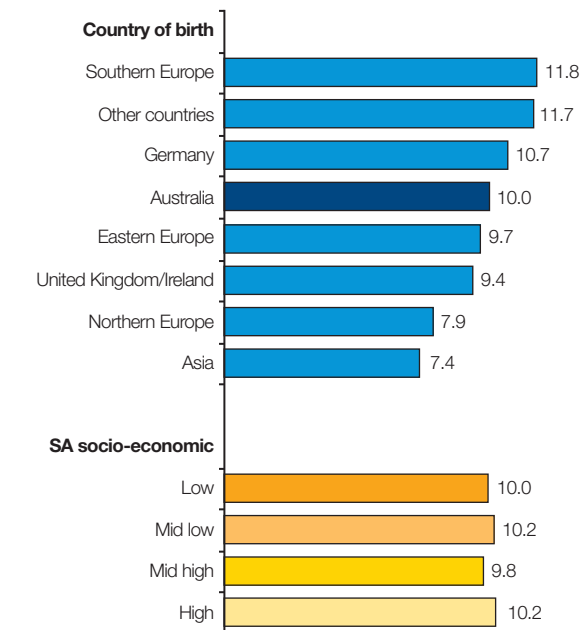
### Country of birth

Differences exist in relation to country of birth. Residents who were born in Asian countries have a lower incidence of leukaemia than Australian born residents, while those from Southern Europe have a higher incidence.

### SES/region

A consistent socio-economic gradient in leukaemia incidence is not evident in South Australia. However within metropolitan Adelaide the Eastern region has a higher incidence than the Northern region (1977–2001). In country South Australia, the Lower North and Pirie regions recorded a higher incidence than the Flinders Ranges.

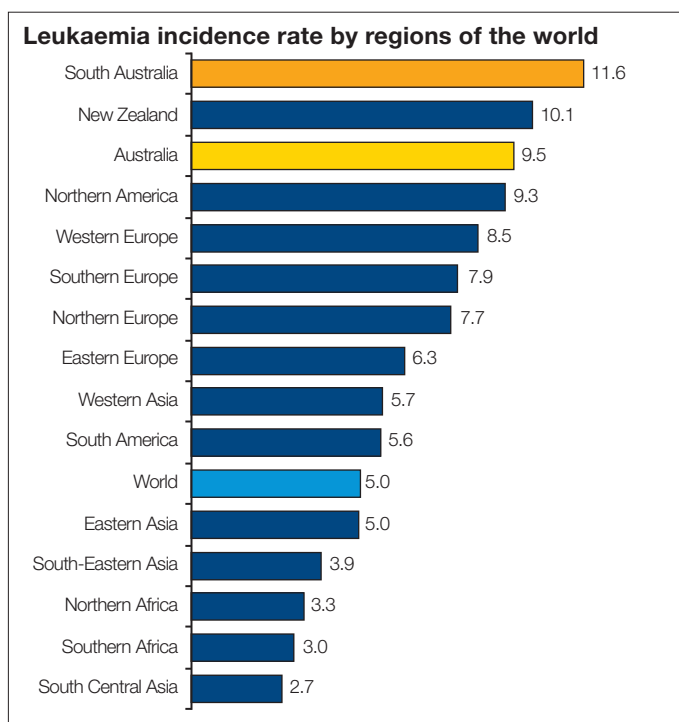
#### Leukaemia incidence by country of birth and SES



(annual rate/100,000 – SA 1977–2001 – ASR (World Pop))

# Global comparisons

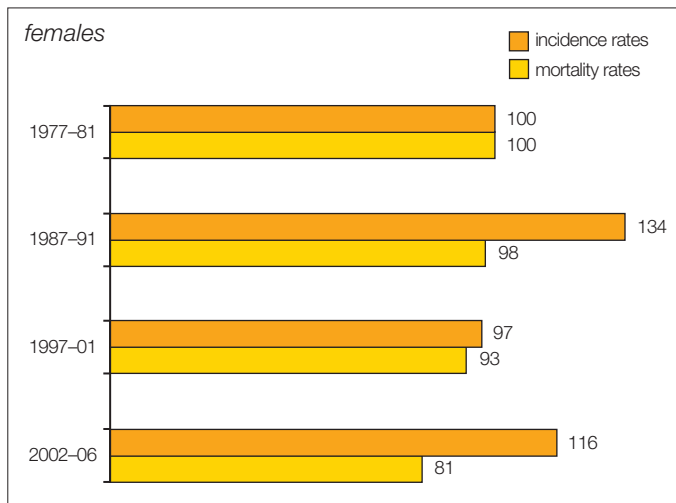
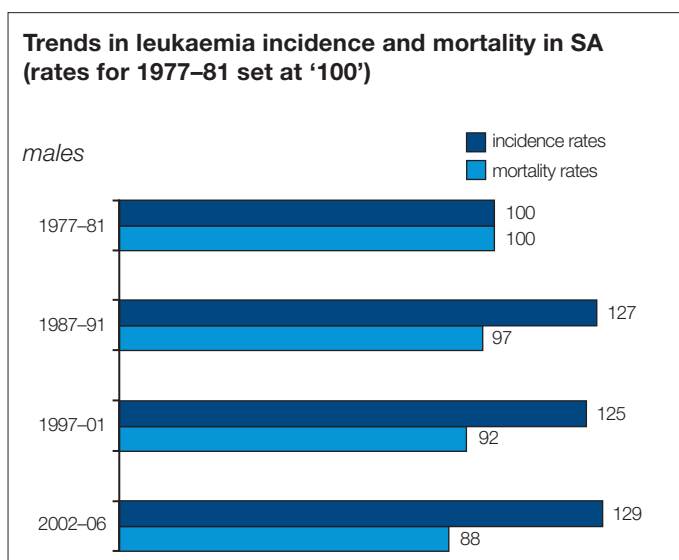
South Australia and Australia have high incidence of leukaemia by international standards, exceeding that of Africa, Asia, North America, Europe and the United Kingdom/Ireland. The worldwide variation is approximately fivefold.



(rate/100,000 ASR World Pop. Globocan 2002)

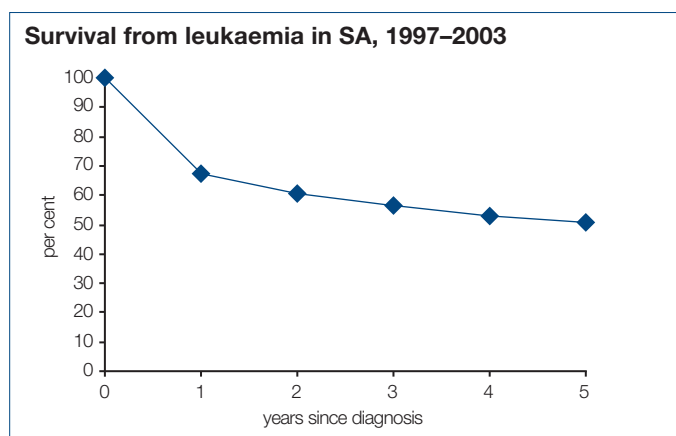
## Trends

In South Australia the incidence of leukaemia has increased between 1977–1981 and 2002–2006 among males (by 29%) but less so among females (16%). During the same period mortality rates have declined slightly for both males and females.



## Survival

The proportion of South Australians diagnosed with leukaemia who survived their disease for five years after diagnosis has increased from 41% for those diagnosed between 1977–1981 to 51% for those diagnosed between 1997–2003.



## Risk factors

The causes of leukaemia are largely unknown.

Environmental risk factors include:

- exposures to large doses of ionising radiation
- chemical exposures (e.g. benzene)
- viral exposures ( e.g. Human T-Cell Leukaemia Virus 1).

Updated March 2009 based on latest SA data (2006)

Data source:  
Cancer Registry Reports, SA Dept Health  
Globocan 2002, IARC