

# Statistics

## pancreatic cancer



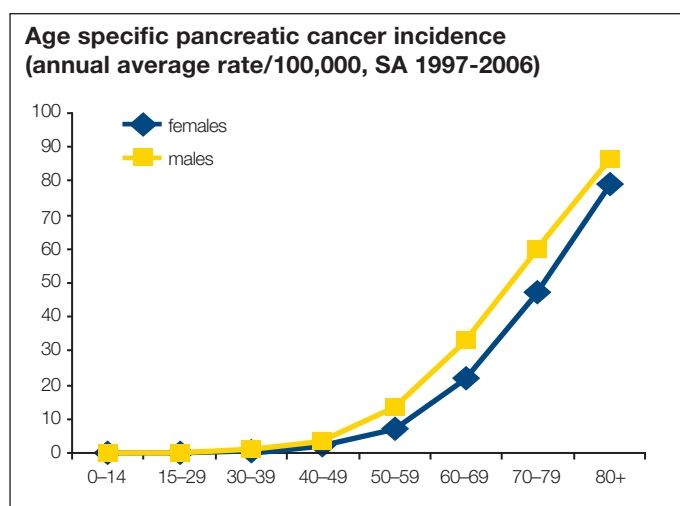
South Australia 2006 figures	males	females	total
number of cases	109	90	199
number of deaths	92	76	168
incidence/100,000 (ASR* Aust 2001 population)	12.8	8.3	10.4
mortality/100,000 (ASR* Aust 2001 population)	11.0	6.8	8.8
risk of developing pancreatic cancer (by age 75 years)	1 in 113	1 in 172	1 in 137

\*ASR – Age Standardised Rate

## Patterns in incidence and mortality

### Age

Pancreatic cancer is rare before the age of 40 years. From 40 years onwards incidence increases with age, to be highest among those aged 80 years or older.



### Gender

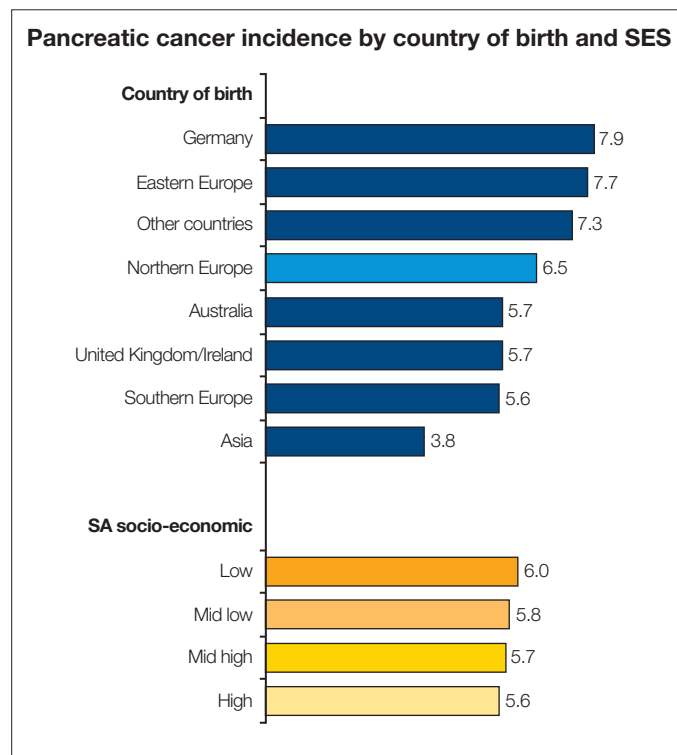
Males have a slightly higher incidence of pancreatic cancer than females, with the ratio being about 1.1 to one in South Australia.

### Country of birth

Within South Australia, the rate was more than a third higher during 1977–2000 among South Australians born in Germany and Eastern Europe than in the Australian born.

### SES/region

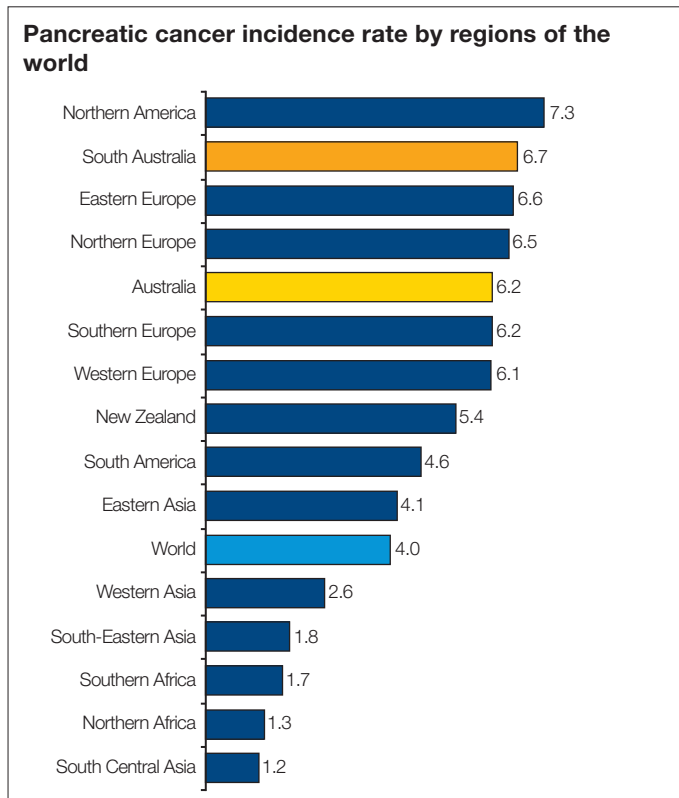
While South Australian data for both sexes combined were suggestive of a lower socio-economic gradient for this cancer in 1977–2001, the gradient was not pronounced and was potentially due to chance. Similarly, there generally was little difference in incidence between Adelaide and country regions. While Pirie and Whyalla tended to have a high incidence, this elevation was readily attributable to chance.



(annual rate/100,000 – SA 1977–2001 – ASR World Pop.)

# Global comparisons

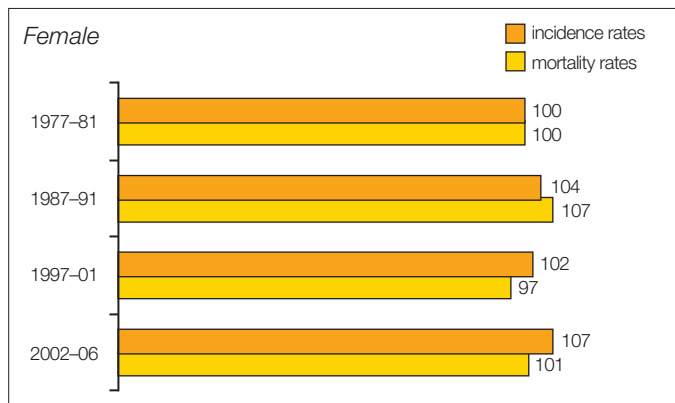
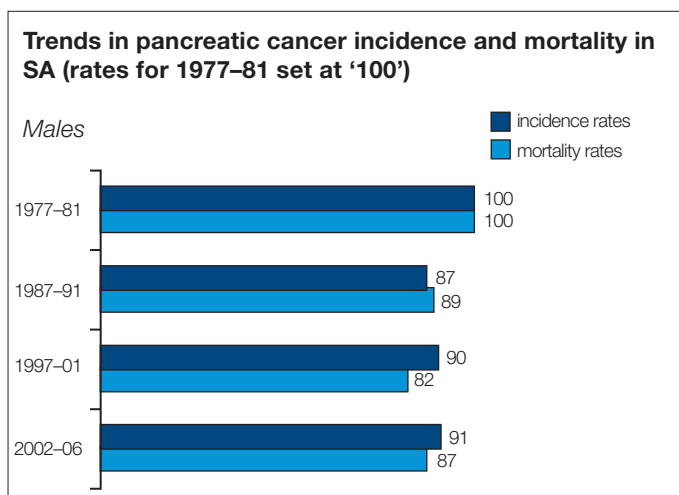
South Australia has a relatively high incidence of this cancer by international standards being surpassed only by North America. The rate for SA was slightly higher than Australia as a whole. Meanwhile there was an approximate fivefold variation in incidence around the world, with the lowest incidence being noted in developing countries.



(rate/100,000 ASR World Pop., Globocan 2002)

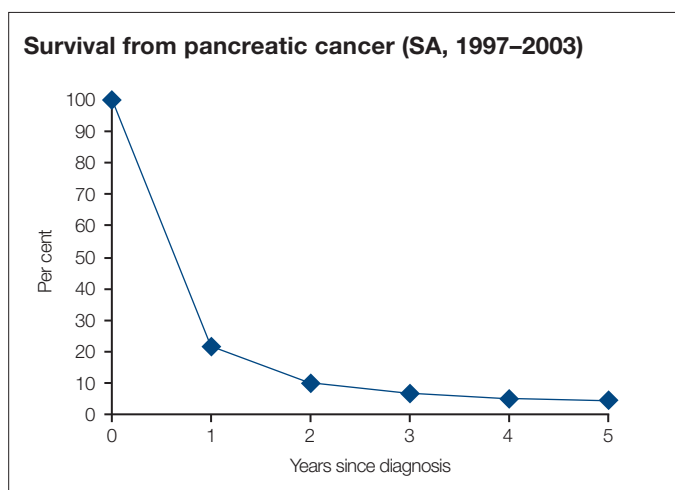
## Trends

Changes in incidence and mortality during 1977–2006 were not pronounced for either males or females and are potentially random fluctuations.



## Survival

Outcomes from pancreatic cancer are very poor with only 4% of cases surviving five years from diagnosis. Outcomes are poor even when the disease appears to be localised at diagnosis. Patterns in South Australia are typical of outcomes in other countries.



## Risk factors

Behavioural and related risk factors include:

- tobacco smoking
- diabetes mellitus and diabetes risk factors such as obesity and high serum levels of triglycerides and cholesterol
- probably diets low in fruit and vegetables.

Updated March 2009 based on latest SA data (2006)

Data source:  
Cancer Registry Reports, SA Dept Health  
Globocan 2002, IARC