

# Statistics

## uterine cancer



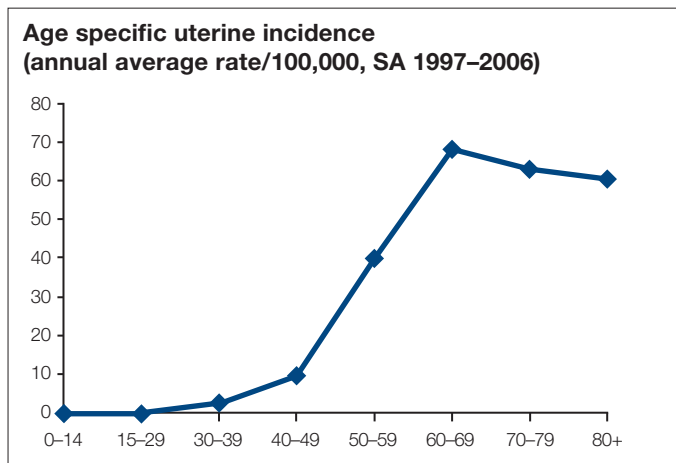
South Australia 2006 figures	females
number of cases	168
number of deaths	31
incidence/100,000 (ASR* Aust 2001 population)	17.2
mortality/100,000 (ASR* Aust 2001 population)	2.9
risk of developing uterine cancer (by age 75 years)	1 in 67

\*ASR – Age Standardised Rate

## Patterns in incidence and mortality

### Age

The incidence of uterine cancer increases steadily from the age of 40 years to peak among women aged 80 years and older. Rates are relatively low before the age of 40 years.



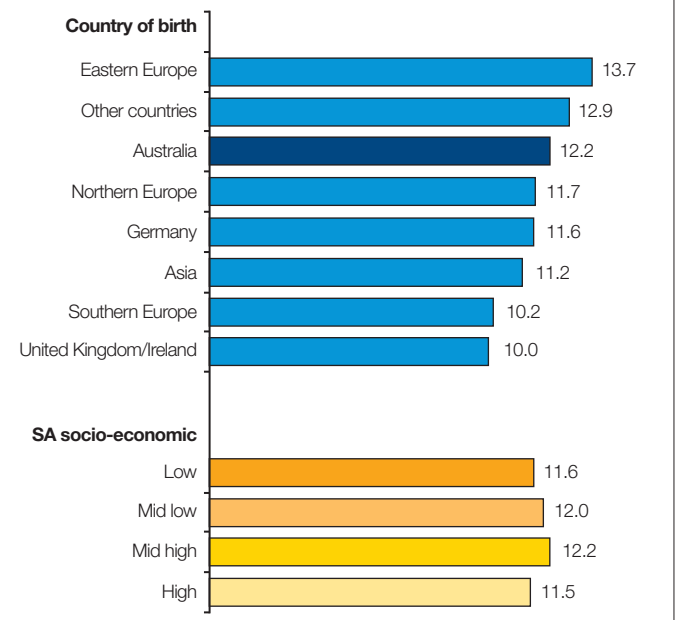
### Country of birth

Within South Australia overseas-born females had an incidence during 1977-2000 about 11% lower than the Australian born. Females born in the United Kingdom/Ireland contributed to this lower incidence in the overseas born.

### SES/region

Socio-economic gradients of cancers of the uterine body were not evident by place of residence in South Australia during 1977-2001. Similarly there was little evidence of variations in incidence by region of residence, although there was the suggestion of some differences, such as higher rates in the Eastern region of Adelaide and in the Mount Lofty Ranges than in the Far North.

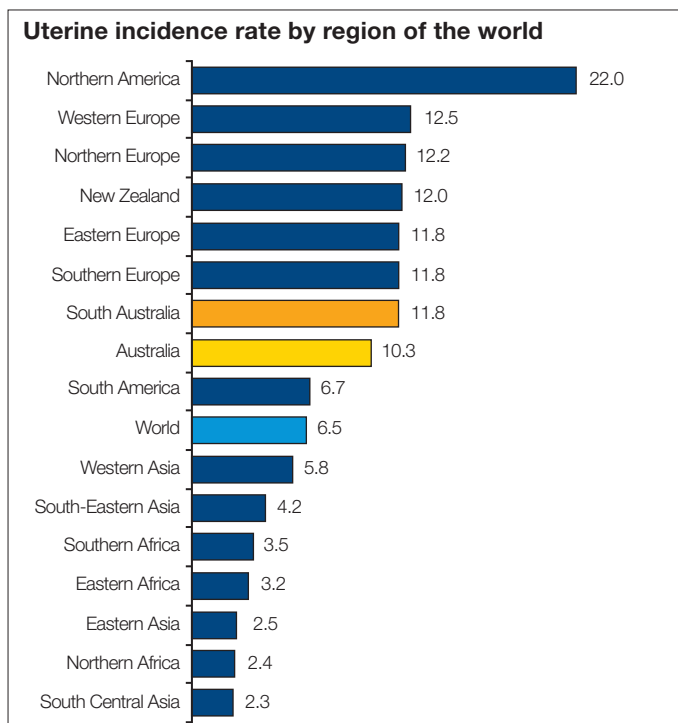
### Uterine incidence by country of birth and SES



(annual rate/100,000 – SA1977-2001 – ASR world pop)

## Global comparisons

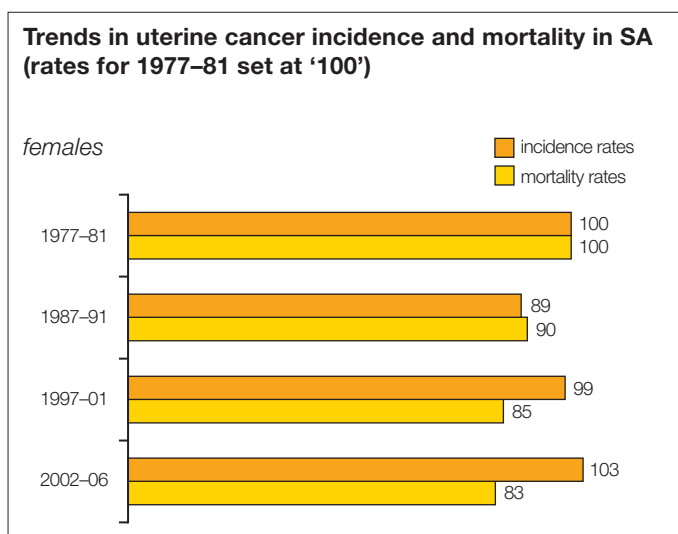
The incidence of uterine cancer varied 10-fold around the world in 2002, with South Australia showing a middle-ranking incidence. South Australia had a lower incidence than North America and Europe but a higher incidence than Africa, Asia, Central and South America.



(rate/100,000 ASR World Pop., Globocan 2002)

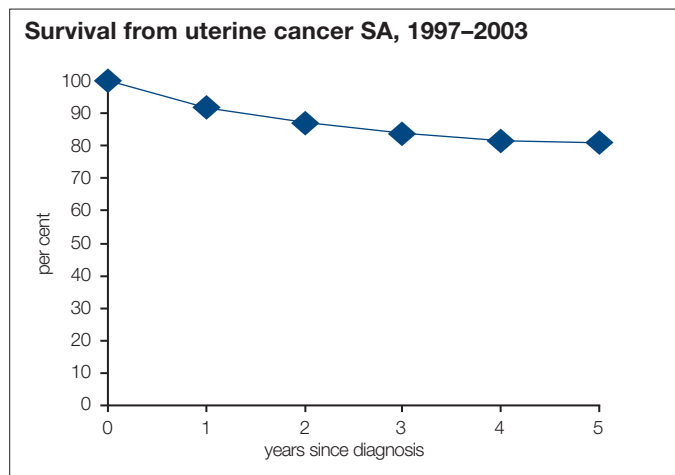
## Trends

Uterine cancer incidence has not changed significantly over time between 1977–81 and 2002–2006. However mortality appears to have decreased slightly in that time.



## Survival

Survival outcomes are relatively favourable for uterine cancer. Among women diagnosed between 1997 and 2003, 81% survived five or more years after their diagnosed. This is a slight improvement on survival rates for women diagnosed two decades earlier (1977–1981), where the five year survival was 77%.



## Risk factors

Behavioural and related risk factors include:

- history of no or few children
- being overweight
- prolonged exposure to oestrogen replacement therapy without accompanying progestogen administration
- a history of tamoxifen therapy.

Updated March 2009 based on latest SA data (2006)

Data source:  
Cancer Registry Reports, SA Dept Health  
Globocan 2002, IARC